

# MDE/MDG17PR

MAYTAG® COMMERCIAL  
SUPER-CAPACITY DRYER



## LEGENDARY MAYTAG DEPENDABILITY

Maximizing your equipment investment for over a half century.



Built with optional non-metered design.



## FOR YOUR CUSTOMERS:

- Extra-Large 7.4 cu. ft. Capacity
- Easy-To-Use One-Touch Cycle Selection
- High Airflow For Better Clothes Care
- Time Remaining Display
- Optional Top-Off
- No Need to Carry Quarters

## FOR YOUR OPERATION:

- TurboVent™—Better Performance On Long Vents
- Advanced Computer Trac® Controls Allow For Easy Programming
- Front Access For Easier Self Service
- Accu Trac® Audit System With Two-Way Data Communication
- Large-Capacity Metal Mesh Lint Filter
- Debit Card Compatibility

## BUILT-TO-LAST™ FEATURES:

- Premium Porcelain-Enamel Top
- Four Roller Suspension With Permanently Lubricated Bearings
- Blower Guard Reduces Service Calls
- Best Warranty in the Business

LAUNDRY SOLUTIONS  
YOU CAN *DEPEND* ON.

FASTER DRYING WITH  
TURBOVENT™ TECHNOLOGY

visit [maytagcommerciallaundry.com](http://maytagcommerciallaundry.com)  
or call 800-662-3587



## OUR COMMITMENT TO DEPENDABLE QUALITY

At Maytag, we believe durable goods should remain just that. That's why every Maytag® product is constructed of the highest-quality materials and with the utmost in precision craftsmanship. It's also why we stand behind our equipment with solid service and support from our professional Maytag laundry suppliers. Simply put, when you choose Maytag® products, you ensure your peace of mind.



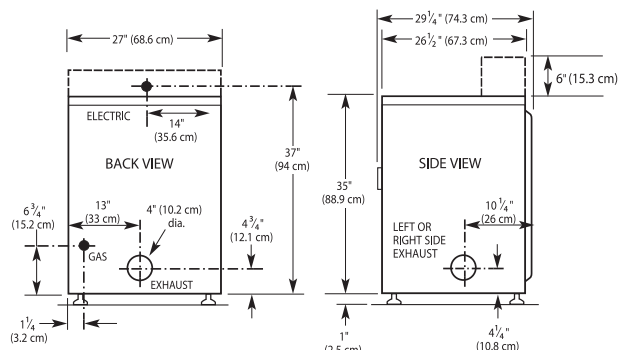
## MDE/MDG17PR MAYTAG® COMMERCIAL SUPER-CAPACITY DRYER

### Maytag® Commercial Super-Capacity Dryer

#### MICROPROCESSOR CARD READER-READY

DRYER SPECIFICATIONS	
<b>MODEL</b>	<b>MDE/MDG17PR</b>
<b>MOTOR</b>	
Single-phase, thermoprotected against overload, auto-reset	•
HP (kw)	1/5 (.25)
<b>CAPACITY</b>	
Cu. ft. (liters)	7.4 (209.5)
<b>AIRFLOW</b>	
Gas models — cfm (cmm)	230 (6.5)
Electric models — cfm (cmm)	215 (6.1)
<b>TUMBLE SPEED</b>	
RPM	50 ± 1.5
<b>ELECTRICAL REQUIREMENTS</b>	
MDE model — voltage	240V/60Hz
MDG model — voltage	120V/60Hz
<b>BREAKER/FUSE REQUIREMENTS</b>	
MDE model — amps	30
MDG model — amps	15
<b>APPROXIMATE OVERALL DRAW</b>	
Watts	6,000
<b>EXHAUST DUCT DIAMETER</b>	
In. (mm)	4 (101.6)
<b>ELECTRONIC BURNER IGNITION</b>	
MDG model	•
<b>GAS RATING</b>	
MDG model — BTU/hr. (kcal/hr.)	24,000 (6,048)
<b>GAS INLET</b>	
MDG model — in.	3/8 N.P.T.
<b>AUTOMATIC PRESSURE REGULATOR</b>	
MDG models	•
<b>ADJUSTABLE LEVELING LEGS</b>	
	•
<b>APPROXIMATE WEIGHT</b>	
Crated — lbs. (kg)	140 (63.5)
Uncrated — lbs. (kg)	126 (57.2)

See specific instructions for proper installation. Because of continuous product improvement, Maytag reserves the right to change specifications without notice.



#### MAXIMUM EXHAUST DUCT LENGTH PER NUMBER OF TURNS

Number Of 90° Turns	Rigid Metal Vent	
	Box Hood and Louvered Style	Angled Hood Style
0	135 ft. (41.2 m)	129 ft. (39.3 m)
1	125 ft. (38.1 m)	119 ft. (36.3 m)
2	115 ft. (35.1 m)	109 ft. (33.2 m)
3	106 ft. (32.3 m)	100 ft. (30.5 m)
4	98 ft. (29.9 m)	92 ft. (28.0 m)

Number Of 90° Turns	Flexible Metal Vent	
	Box Hood and Louvered Style	Angled Hood Style
0	76 ft. (23.2 m)	62 ft. (18.9 m)
1	71 ft. (21.6 m)	57 ft. (17.4 m)
2	67 ft. (20.4 m)	53 ft. (16.2 m)
3	65 ft. (19.8 m)	51 ft. (15.6 m)
4	63 ft. (19.2 m)	49 ft. (14.9 m)



NEW YORK CITY M.E.A.



### THE BEST WARRANTY IN THE BUSINESS— 5 YEARS ON ALL PARTS

For a period from the date of original purchase through the time listed above, the designated parts that fail in normal commercial use will be repaired or replaced free of charge for the part itself, with the owner paying all other costs, including labor, transportation and customs duty. Chemical damage is excluded from all warranty coverage. See complete warranty for details.